



Merriwa Education Support Centre

Dear Parents & Families,

A heartfelt congratulations to all involved in last Friday's assembly. It was a fantastic showcase of our students' talents and the dedication of our staff. It's always a joy to see our kids enjoying themselves and shining in their own unique ways. Thank you for creating such a positive and inclusive space where every student feels celebrated! We look forward to our early childhood assembly in week 6 of Term 4.

P & C

Last week's Burger Day fundraiser was a sizzling success thanks to the incredible efforts of our Parents & Citizens Association. Your dedication, teamwork, and generosity make a real difference to our school.

Fees and Charges

Thank you to families who have paid Stationery Fees and Voluntary Contributions. The stationery fee is \$60.00 and the contributions is \$40.00 for the year. Direct Debit can be made into our bank account for your convenience. Please ensure you put your child's name as the reference.

Account Name: Merriwa Education Support Centre

BSB: 066 040

Account No: 1990 7283

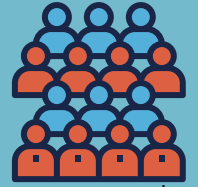
Kind Regards

Karen Macri, Principal

Our Website

merriwaesc.wa.edu.au

Breakfast Club
everyday day
from 8am in the
undercover area



Assembly

Senior ESC
Interschool
Athletics
Carnival

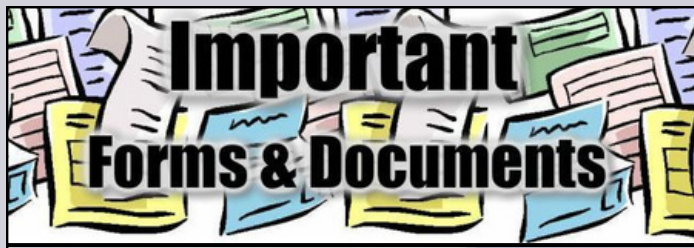
Tuesday 2nd Sept
@Westminster
ESC
Year 3-5

Year 6 Swan Valley
excursion
Tuesday 2nd Sept

Junior ESC
Interschool
Athletics
Carnival

Tuesday 16th Sept
@Roseworth ESC
Year K-2

Merriwa
Faction Carnival
Friday 19th Sept



Student Update Forms have been sent home via students to parents. It is vital that your child's contact information is up to date on our school system.

Parents are asked to amend any details on these forms or sign to indicate there are no changes and return to your child's teacher.

Congratulations to our Merit Award Winners

Room 24 - Noah & Jarom, Room 25 - Kai & Buzz
Room 26 - Lawson & Dwayne Room 27 - Joseph
Room 28 - Tobin Room 29 - Lily, Ace, Ivy Jaxon & Grace
All Students - Room 30
Room 30 - George & Jeremy, Room 35 - Beau & Jaxon

It's the time of the year when lots of sickness is around, below is some information from the Health Department

Head lice

Head lice are tiny insect parasites that live on your head and feed on your scalp (the skin covering your head).

They reproduce by laying their eggs (nits) on your hair shaft (the part of your hair closest to the scalp).

Head lice are not dangerous, do not carry diseases, and are not a sign of poor hygiene (cleanliness).

Head lice are spread by head-to-head contact with another person who has head lice. This kind of contact includes doing group work at school, playing, or hugging.

Head lice can run from one head to another in seconds. Head lice cannot fly, jump or swim, but they can sometimes swing from one hair to another.

Brushes and combs are unlikely to transfer head lice or their eggs, as these are very hard to detach from the hair shaft.

Head lice are not spread through bed linen, clothing or head gear (hats and helmets) as they do not leave the scalp unless they are moving to another scalp, or unless they are dead or dying.

Your child may return to school when all live head lice have been removed. There is no need to stay away from school if there are only a few remaining eggs, but you must continue treatment over the following 10 days to ensure that all eggs and hatchlings have been removed.

There are two effective head lice treatments:

the 10 day hair conditioner treatment
insecticide treatments.

Gastroenteritis

Gastroenteritis symptoms usually begin 1 to 2 days after you have taken in the germ, but it can be as early as 1 hour (for example staphylococcal toxin) and as long as 60 days (for example Listeria infection).

Symptoms can include:

- nausea and/or vomiting
- diarrhoea, sometimes containing blood
- stomach pain/cramps
- fever
- generally feeling unwell, including tiredness and body aches.

Your child can't return to school for at least 48 hours after symptoms have finished. This is especially important due to the high-risk nature of our setting and the vulnerability of some of our students.

Thank you for helping us keep our school community safe and healthy.

ROOM 26



ROOM 33



COMMUNITY NEWS



SENSATIONAL CHURCH KIDS

Creating an inclusive experience for kids with autism / adhd

GRAND OPENING

Sat, 20 Sep
Start 11am - 1pm

Meerilinga Community Centre
2 Community Mews, Ballajura

Register today
0469 145 156

Or Book online



Featuring:

- ☆ Sensory Chef
- ☆ Sensory-friendly worship
- ☆ Playground fun
- ☆ Speech and OT endorsed activities

Get up to \$500 for education costs

Achieve a savings goal for 10 months, and ANZ will match it up to \$500.

To be eligible, you need to meet all of these requirements:

- 18+**
18 years or older
- \$**
A regular income (you or your partner)
- 💻**
Attend free online financial education workshops
- ✓**
Are studying yourself or have a child at school, or starting next year
- 🇦🇺**
Current Health Care or Pensioner Concession Card

Saverplus.org.au
1300 610 355



Saver Plus was developed by ANZ and the Brotherhood of St Laurence and is delivered in partnership with The Smith Family and Berry Street. It is funded by ANZ and Department of Social Services.

The Rotary Club of West Perth Inc. proudly presents International Entertainment Australia's...

2025 World Festival of Magic

The World Festival of Magic provides relaxed theatre performances for children and young adults...

- with diverse abilities and backgrounds (wheelchair seating and an Auslan Interpreter at all shows).
- who might require a more flexible and inclusive environment when attending the theatre.
- those who are facing hardship.
- without access or opportunity to live theatre.

Enjoy the "live performance" experience with a casual attitude to audience noise and movement in an accessible and inclusive environment, where you are welcomed and free to be yourself without restriction or judgement.

Featuring a brand new show host and performer, along with some old favourites.
*With moving and occasional flashing lights, and upbeat music.
One-hour show, no interval. Suitable for all ages.

Ideal for School, Community/Social Group and Family Excursions.

ALL TICKETS ARE COMPLIMENTARY, including staff, parent, sibling and carer tickets. Thanks to sponsorship from local businesses.
*Bookings from schools, organisations, carers and families are all welcome.

ASTOR THEATRE PERTH, MOUNT LAWLEY, WA

SHOW DATES	#1 SHOWTIME	#2 SHOWTIME	#3 SHOWTIME
SUNDAY, 31 ST AUGUST 2025	11.30 AM	1.30 PM	3.30 PM
MONDAY, 1 ST SEPTEMBER 2025	10.30 AM	12.30 PM	

To book tickets, please email your name, preferred showtimes, and the number of tickets required to...
meredithnewman@showintent.com.au
or call / text 0404-367-782

Department of Education

Shaping the future

VacSwim

Keep your kids safe and strong in the water.
Enrol them in school holiday swimming lessons.

Spots are limited, enrol now to secure your place.
education.wa.edu.au/vacswim

